



Customer: GVM Brands
Address: 1407 Cape Coral Pkwy E
Cape Coral, FL 33904
Sample ID: Big Dog Tincture
Matrix: Tincture
Labnumber: 23J0333-04

Total mass or volume per unit (g or mL): 60

Density (g/mL): 0.9299

Cannabinoid Profile

Test Conditions: 19°C

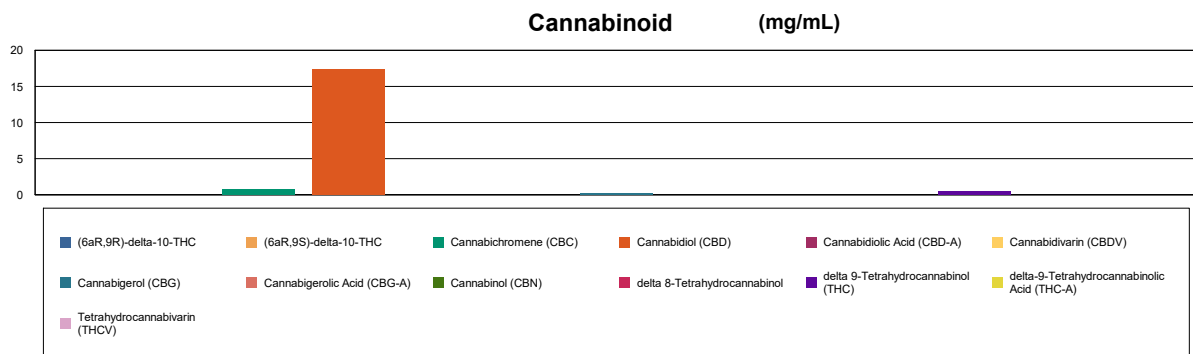
Extraction Technician: SH

Analytical Chemist: SH

Extraction Date(s)	Analysis Date(s)
11/1/2023	10/31/2023

Test Method: Cannabinoid Potency by HPLC		Results		
	LOD (mg/mL)	%	mg/mL	mg/Bottle
Cannabidivarin (CBDV)	<0.10			
Cannabidiolic Acid (CBD-A)	<0.10			
Cannabigerolic Acid (CBG-A)	<0.10			
Cannabigerol (CBG)		0.02	0.181	10.9
Cannabidiol (CBD)		1.74	17.4	1050
Tetrahydrocannabivarin (THCV)	<0.10			
Cannabinol (CBN)	<0.10			
Cannabichromene (CBC)		0.07	0.749	45.0
delta 9-Tetrahydrocannabinol (THC)		0.05	0.510	30.6
delta-9-Tetrahydrocannabinolic Acid (THC-A)	<0.30			
delta 8-Tetrahydrocannabinol	<0.30			
(6aR,9S)-delta-10-THC	<0.30			
(6aR,9R)-delta-10-THC	<0.30			
Cannabinoids Total		%	mg/mL	
Max Active THC (delta-9-tetrahydrocannabinol)		0.05	0.51	
Max Active CBD		1.74	17.40	
Total Cannabinoids		1.89	18.90	

Following USDA guidelines on uncertainty, Altitude Consulting's uncertainty is calculated to be +/- 5% for all cannabinoids using a coverage factor of 2 (95% confidence interval). Measurement uncertainty has not been factored into reported values. Blank results indicate the compound was below the limit of detection.



Gary Brook - Laboratory Director - 11/1/2023

Reporting Limits will vary based on sample extraction weight used for the analysis.

The results of this report are based solely on the sample submitted and cannot be reproduced. Decision Rule: Measurement uncertainty is not accounted for in the reported values.

Results are based solely on calculated numbers. Altitude Consulting makes no Statements of conformity. Pesticide, metal, and microbial analyses are subcontracted to ISO

17025 laboratories.