



Customer: Good Vibe CBD
Address: 4970 E Colfax
Denver, CO 80220
Sample ID: Delta 8
Matrix: Concentrates
Labnumber: 22D0127-01

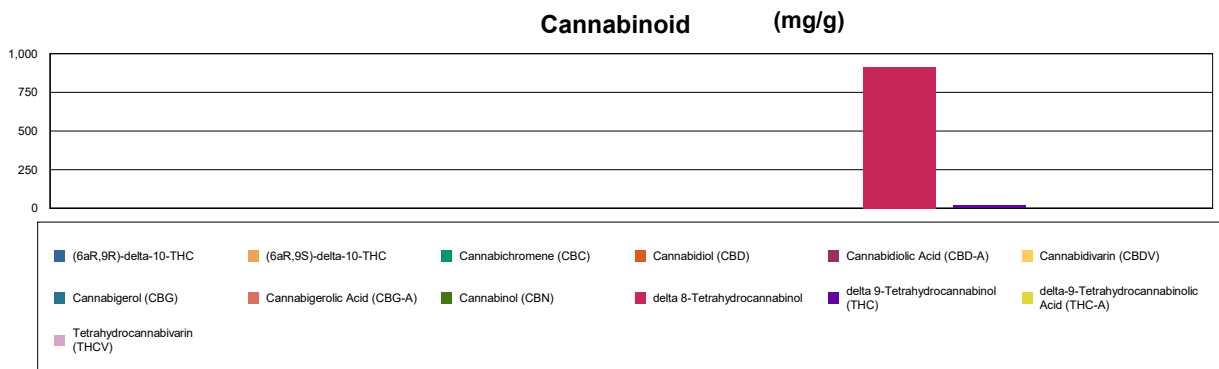
Cannabinoid Profile

Test Conditions: 20°C
Extraction Technician: SH
Analytical Chemist: SH

Extraction Date(s)	Analysis Date(s)
4/21/2022	4/21/2022

Cannabinoids (HPLC)	Results		
	LOD (mg/g)	%	mg/g
Cannabidivarin (CBDV)	<0.30		
Cannabidiolic Acid (CBD-A)	<0.30		
Cannabigerolic Acid (CBG-A)	<0.30		
Cannabigerol (CBG)	<0.30		
Cannabidiol (CBD)	<0.30		
Tetrahydrocannabivarin (THCV)	<0.30		
Cannabinol (CBN)	<0.30		
Cannabichromene (CBC)	<0.30		
delta 9-Tetrahydrocannabinol (THC)		1.92	19.2
delta-9-Tetrahydrocannabinolic Acid (THC-A)	<0.70		
delta 8-Tetrahydrocannabinol		91.56	916
(6aR,9S)-delta-10-THC	<0.70		
(6aR,9R)-delta-10-THC	<0.70		
Cannabinoids Total		%	mg/g
Max Active THC (delta-9-tetrahydrocannabinol)		1.92	19.20
Max Active CBD		<0.03	<0.30
Total Cannabinoids		93.50	935.00

Following USDA guidelines on uncertainty, Altitude Consulting's uncertainty is calculated to be +/- 2% for all cannabinoids using a coverage factor of 2 (95% confidence interval). Measurement uncertainty has not been factored into reported values. Blank results indicate the compound was below the limit of detection.



Gary Brook - Laboratory Director - 4/22/2022

Reporting Limits will vary based on sample extraction weight used for the analysis.

The results of this report are based solely on the sample submitted and cannot be reproduced. Decision Rule: Measurement uncertainty is not accounted for in the reported values. Results are based solely on calculated numbers. Altitude Consulting makes no Statements of conformity. Pesticide, metal, and microbial analyses are subcontracted to ISO 17025 laboratories.



Customer: Good Vibe CBD
Address: 4970 E Colfax
Denver, CO 80220
Sample ID: Good Vibe CBD Brazillian Santos Coffee
Matrix: Edible
Labnumber: 22D0127-02

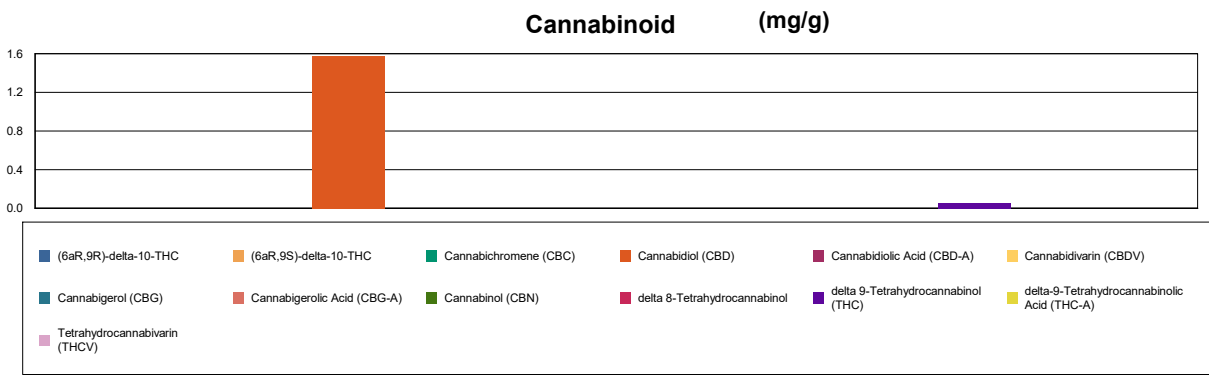
Cannabinoid Profile

Test Conditions: 20°C
Extraction Technician: SH
Analytical Chemist: SH

Extraction Date(s)	Analysis Date(s)
4/21/2022	4/21/2022

Cannabinoids (HPLC)	Results		
	LOD (mg/g)	%	mg/g
Cannabidivarin (CBDV)	<0.030		
Cannabidiolic Acid (CBD-A)	<0.030		
Cannabigerolic Acid (CBG-A)	<0.030		
Cannabigerol (CBG)	<0.030		
Cannabidiol (CBD)		0.16	1.58
Tetrahydrocannabivarin (THCV)	<0.030		
Cannabinol (CBN)	<0.030		
Cannabichromene (CBC)	<0.030		
delta 9-Tetrahydrocannabinol (THC)		0.006	0.057
delta-9-Tetrahydrocannabinolic Acid (THC-A)	<0.050		
delta 8-Tetrahydrocannabinol	<0.050		
(6aR,9S)-delta-10-THC	<0.050		
(6aR,9R)-delta-10-THC	<0.050		
Cannabinoids Total		%	mg/g
Max Active THC (delta-9-tetrahydrocannabinol)		0.01	0.06
Max Active CBD		0.16	1.58
Total Cannabinoids		0.16	1.63

Following USDA guidelines on uncertainty, Altitude Consulting's uncertainty is calculated to be +/- 2% for all cannabinoids using a coverage factor of 2 (95% confidence interval). Measurement uncertainty has not been factored into reported values. Blank results indicate the compound was below the limit of detection.



Gary Brook - Laboratory Director - 4/22/2022

Reporting Limits will vary based on sample extraction weight used for the analysis.

The results of this report are based solely on the sample submitted and cannot be reproduced. Decision Rule: Measurement uncertainty is not accounted for in the reported values. Results are based solely on calculated numbers. Altitude Consulting makes no Statements of conformity. Pesticide, metal, and microbial analyses are subcontracted to ISO 17025 laboratories.



Customer: Good Vibe CBD
Address: 4970 E Colfax
Denver, CO 80220
Sample ID: Good Vibe CBD Honey
Matrix: Edible
Labnumber: 22D0127-03

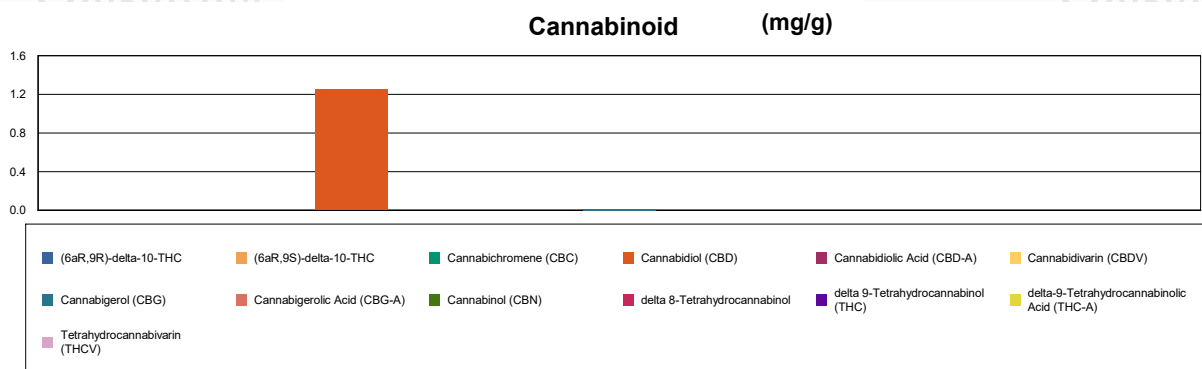
Cannabinoid Profile

Test Conditions: 20°C
Extraction Technician: SH
Analytical Chemist: SH

Extraction Date(s)	Analysis Date(s)
4/21/2022	4/21/2022

Cannabinoids (HPLC)	Results		
	LOD (mg/g)	%	mg/g
Cannabidivarin (CBDV)	<0.020		
Cannabidiolic Acid (CBD-A)	<0.020		
Cannabigerolic Acid (CBG-A)	<0.020		
Cannabigerol (CBG)		0.002	0.018
Cannabidiol (CBD)		0.13	1.25
Tetrahydrocannabivarin (THCV)	<0.020		
Cannabinol (CBN)	<0.020		
Cannabichromene (CBC)	<0.020		
delta 9-Tetrahydrocannabinol (THC)	<0.050		
delta-9-Tetrahydrocannabinolic Acid (THC-A)	<0.050		
delta 8-Tetrahydrocannabinol	<0.050		
(6aR,9S)-delta-10-THC	<0.050		
(6aR,9R)-delta-10-THC	<0.050		
Cannabinoids Total		%	mg/g
Max Active THC (delta-9-tetrahydrocannabinol)		<0.005	<0.050
Max Active CBD		0.13	1.25
Total Cannabinoids		0.13	1.27

Following USDA guidelines on uncertainty, Altitude Consulting's uncertainty is calculated to be +/- 2% for all cannabinoids using a coverage factor of 2 (95% confidence interval). Measurement uncertainty has not been factored into reported values. Blank results indicate the compound was below the limit of detection.




Gary Brook - Laboratory Director - 4/22/2022

Reporting Limits will vary based on sample extraction weight used for the analysis.

The results of this report are based solely on the sample submitted and cannot be reproduced. Decision Rule: Measurement uncertainty is not accounted for in the reported values.

Results are based solely on calculated numbers. Altitude Consulting makes no Statements of conformity. Pesticide, metal, and microbial analyses are subcontracted to ISO 17025 laboratories.